



COMPANY PROFILE

Empowering shipping companies
towards their Digital Transformation

METIS CYBERSPACE TECHNOLOGY SA, established in 2016, specializes in the development of innovative solutions that empower shipping companies towards their journey to digital transformation.

Based on a team of skillful engineers with considerable expertise in mechanical & naval engineering as well as extensive business know-how in shipping, METIS has managed in a short period of time to make a significant impact in the Global Maritime Industry.

METIS, offers an intelligent, solution through which executives of various roles and from multiple levels of management, are able to accomplish their everyday tasks, plan upcoming events, diagnose problems, resolve critical issues and make justified decisions. Companies that use the METIS platform enjoy significant benefits that help them stand out from the competition, such as:

- Achieve operational efficiency
- Optimize F.O. Consumption
- Enhance the planned maintenance process
- Manage the environmental footprint
- Ensure regulatory compliance.

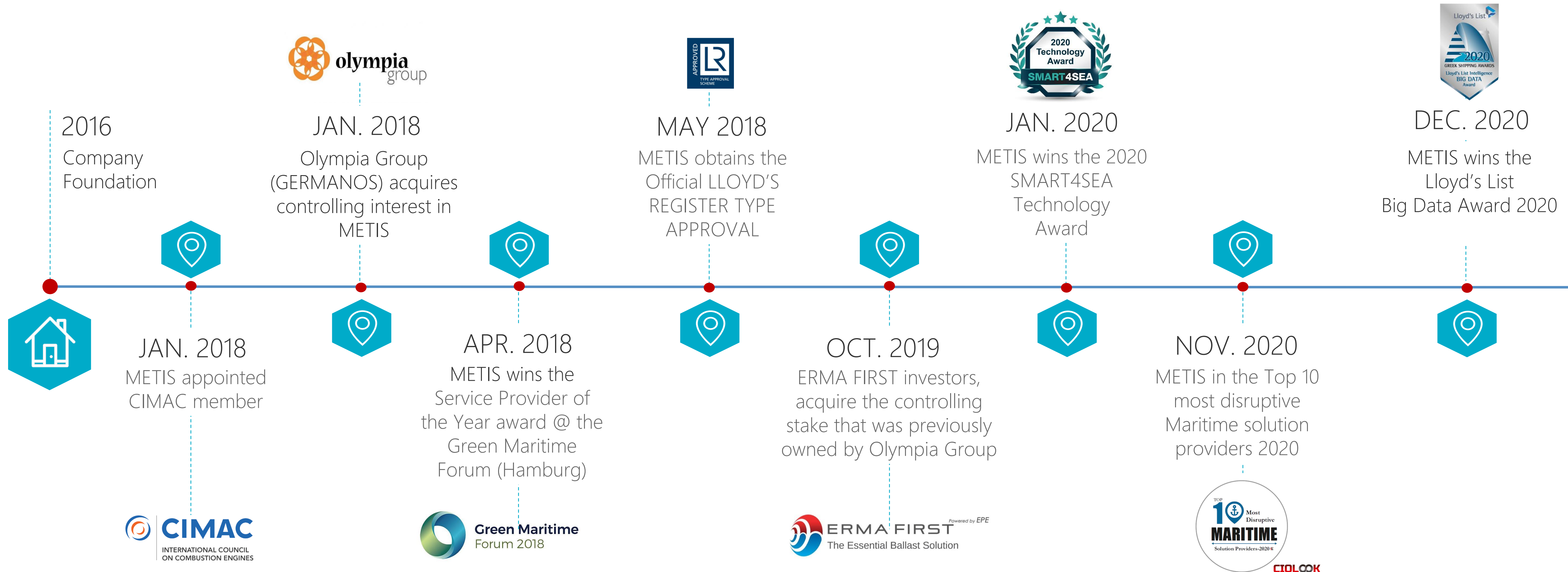


Since Oct. 2019, METIS maintains a strong corporate strategic affiliation with ERMA FIRST best-known in the shipping industry for its successful Ballast Water Treatment System that was the first of its kind, type-approved by the US Coast Guard.



METIS in a timeline

MAJOR MILESTONES SINCE THE FOUNDATION OF THE COMPANY



End-to-End Digital Transformation Solution for the Shipping Industry

Automated Data Acquisition

EQUIPMENT

Real-Time Monitoring & Predictive Data Analytics
Powered by A.I.

CLOUD SOFTWARE

Performance Evaluation & Consulting

PROFESSIONAL SERVICES



METIS carries a heritage of more than 10 years experience in the areas of data acquisition, vessel monitoring and performance evaluation. All this business knowhow has been transferred to an end-to-end digital transformation platform that enables shipping companies to have an accurate and reliable view assessing the past performance of their vessels, monitor their operating status at present and eventually predict their future behavior.

ASSESS

PAST PERFORMANCE

MONITOR

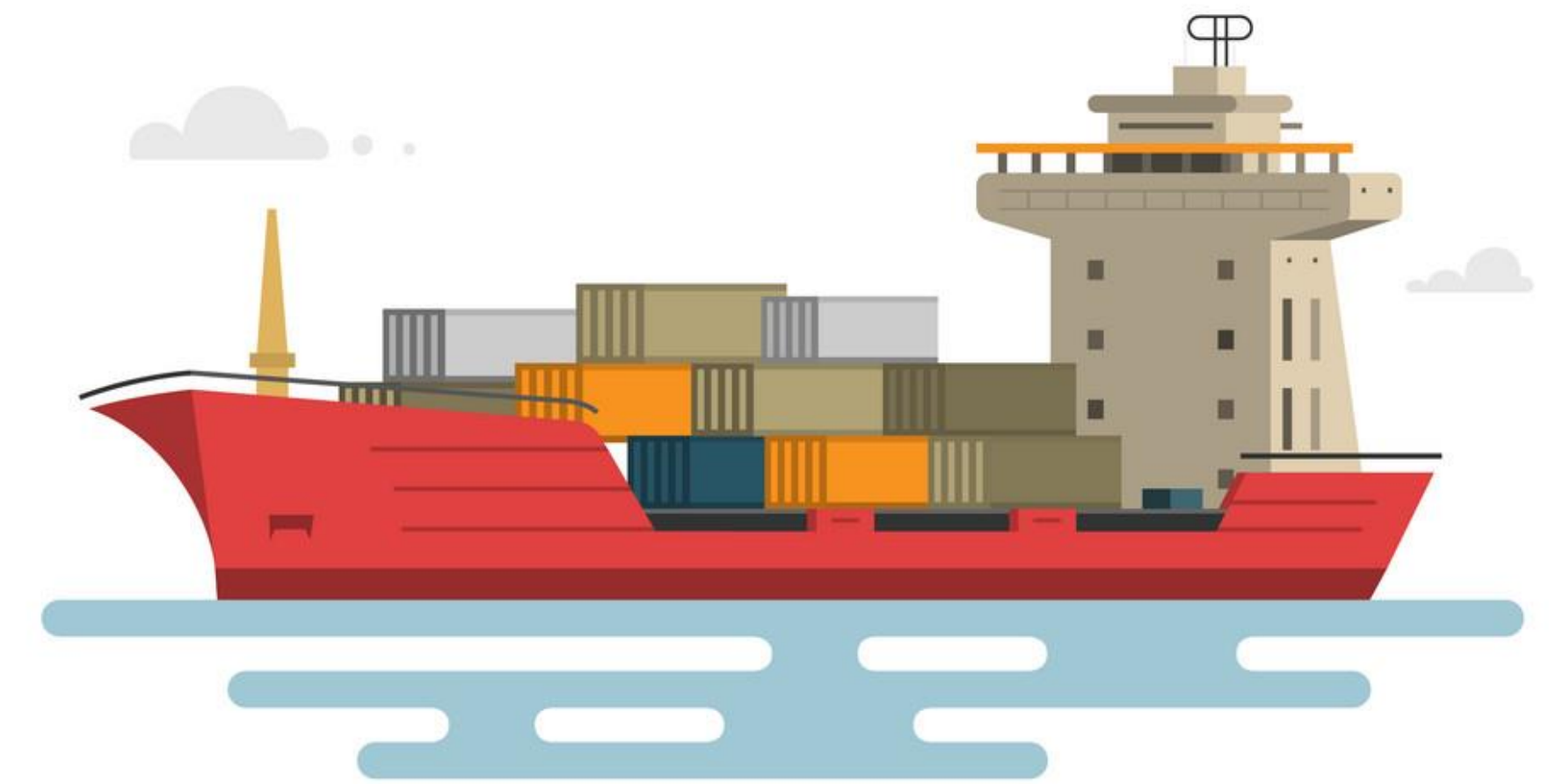
PRESENT OPERATION

PREDICT

FUTURE BEHAVIOR

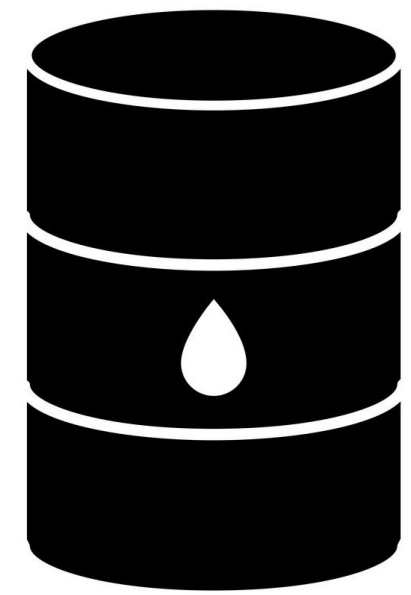
“You can't manage what you don't measure”

Peter Drucker

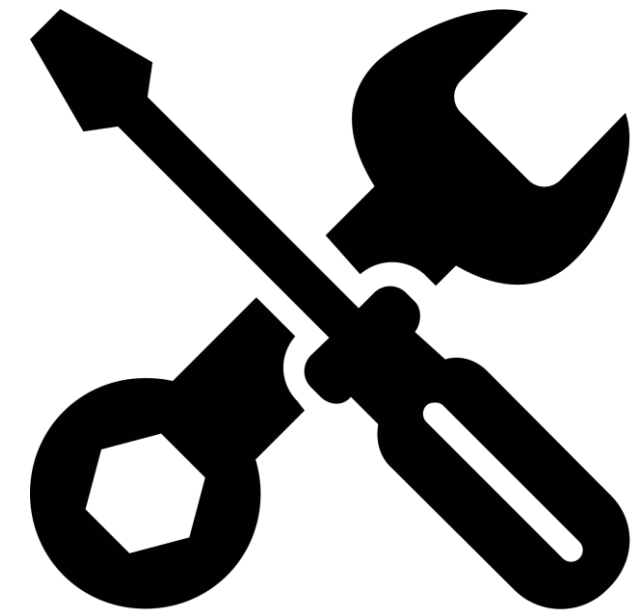


Highlighted METIS Services

DOMAINS OF TRUE VALUE



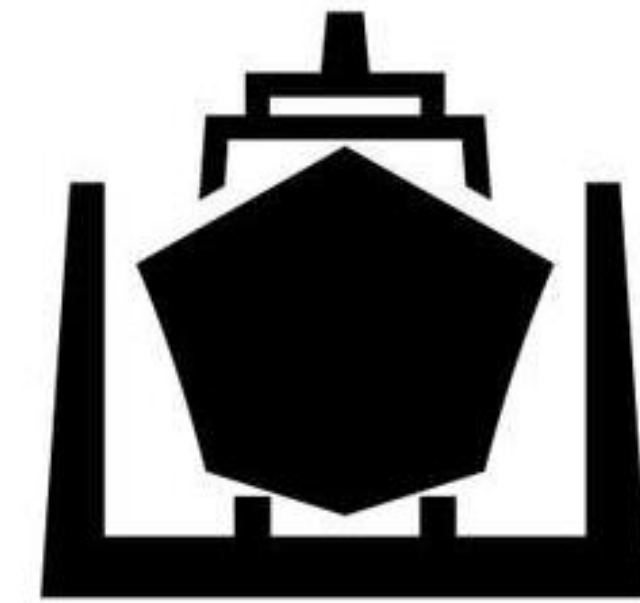
F.O. Consumption
Analysis & Optimization



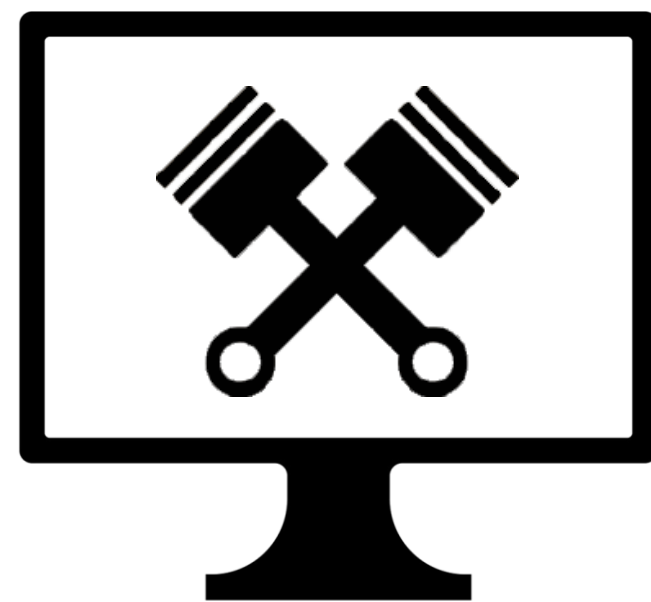
Planned Maintenance
Optimization



Voyage Analysis &
Performance Evaluation

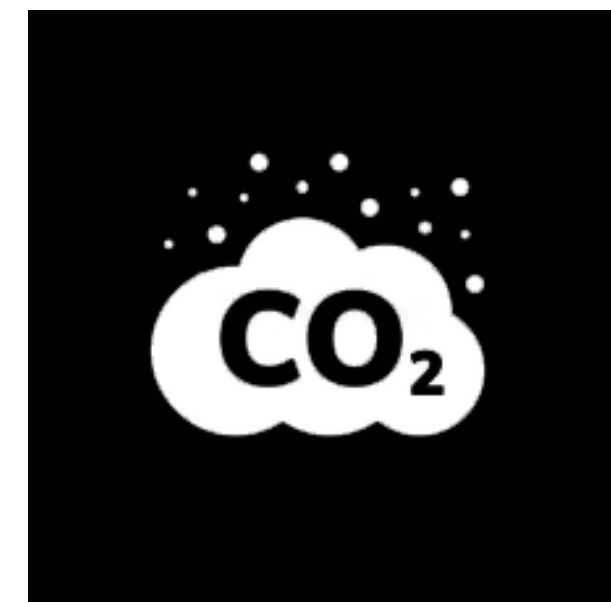


Hull Fouling
Analysis

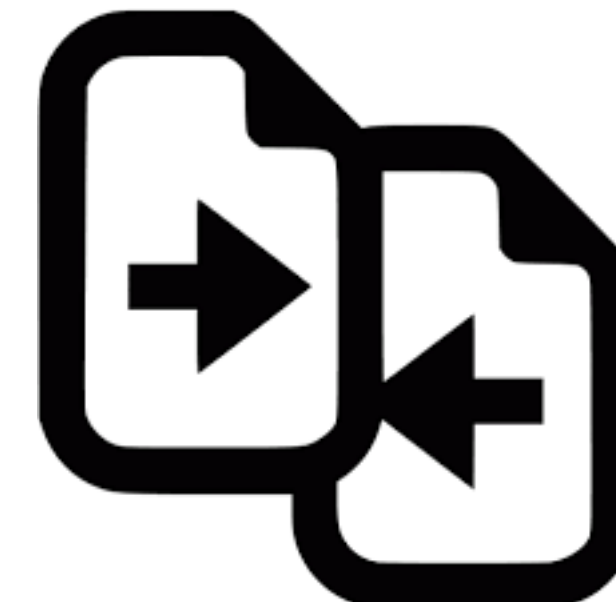


Performance Monitoring &
Evaluation of Machinery
Equipment

M/E, Diesel Generators, Boilers, Ballast, Scrubbers



Emissions & Regulatory
Compliance Monitoring



Charter Party Agreement
Monitoring & Claims Management



Route Cost
Prediction & Optimization

The functionality of all service modules is greatly enhanced by a customized [Report Generation](#) system, an automated [Alerting & Notification](#) mechanism as well as an intelligent, marine specific [Virtual Personal Assistant](#) that provides instantly any piece of information through an intuitive chat-like interface.

A.I. THE TECHNOLOGY THAT HAS REVOLUTIONIZED THE SHIPPING INDUSTRY

AI based systems being able to process huge volumes of data and apply human-like intelligence and business knowhow, redefine the concept of performance management and optimization for the global shipping community.

METIS utilizes the power of Artificial Intelligence to develop services that enhance the operational efficiency of the maritime industry. We deliver technology and expertise that enable shipping companies to:

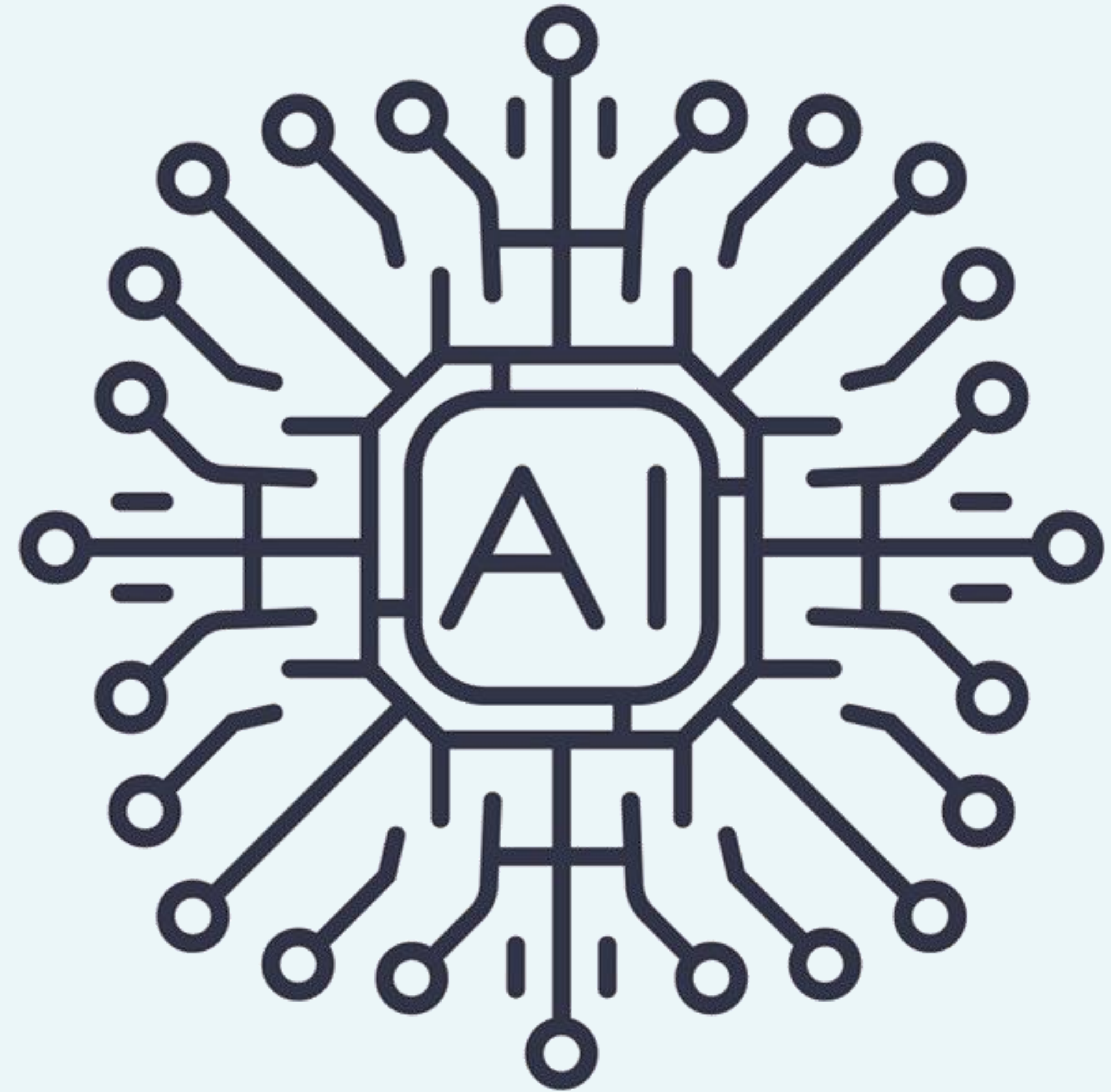
- Uncover complex patterns of behavior
- Generate valuable cause & effect correlations
- Identify optimum operating points under any condition
- Mitigate inefficiencies

DECISION MAKING driven by A.I.

The game-changing value of A.I. in shipping has to do greatly with the ability to accurately predict the operating performance of the vessel as well the behavior of her various mechanical components in the future. The decision-making capacity of the companies who use it is greatly enhanced while at the same time they gain a significant competitive advantage.



Virtual Personal Assistant is a unique concept introduced by METIS for the first time in global shipping. Through this concept METIS implements a virtual employee which monitors the vessels in a 24x7 basis and interacting with the users in plain English (through a chatbot like interface) is able to retrieve instantly, any kind of information, provide specialized analysis, send alerts for critical events and automatically deliver predefined reports.



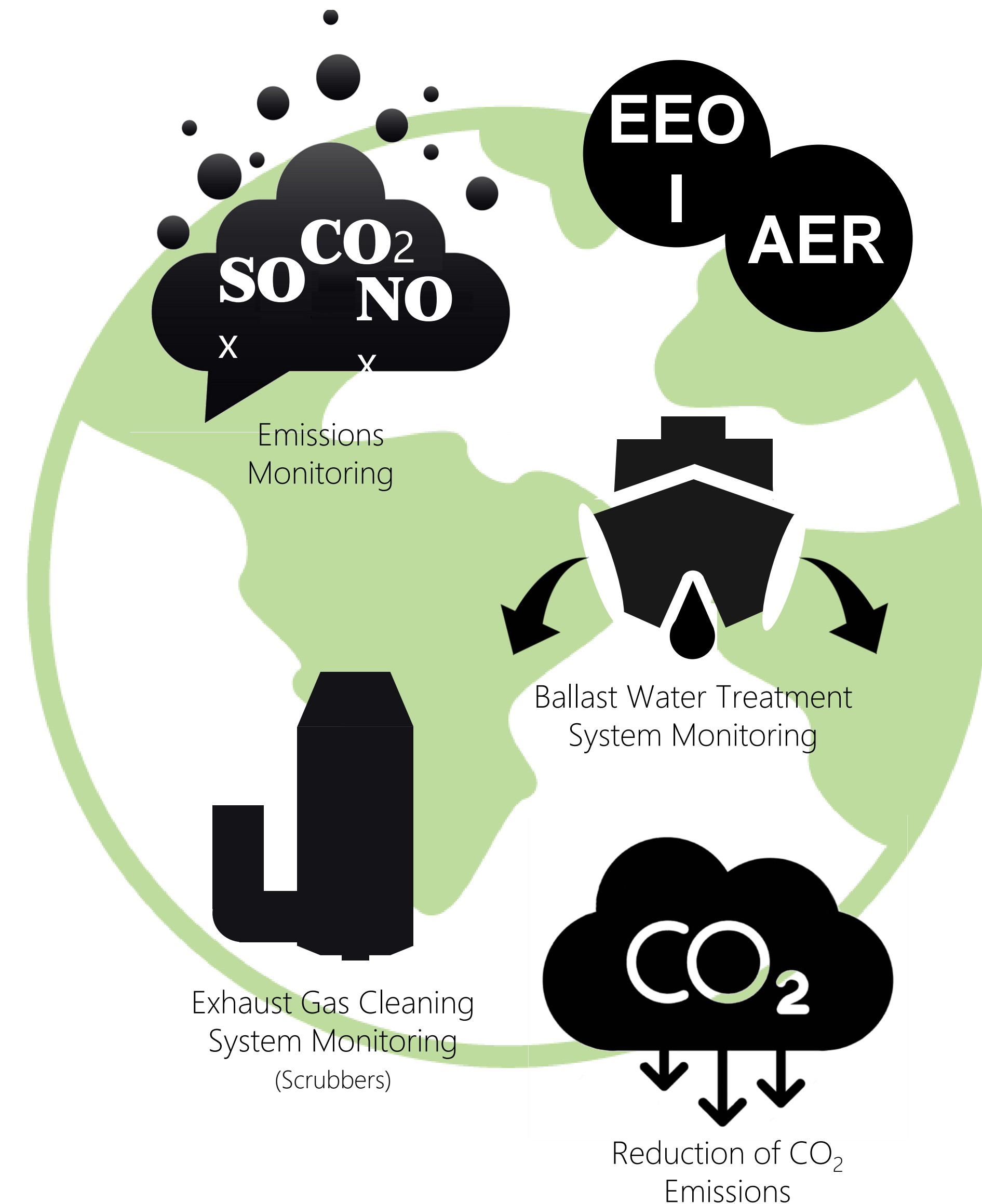
Advanced Digital Services and A.I.

FOR A MORE SUSTAINABLE SHIPPING

Protect the environment while at the same time helping shipping companies to:

- Achieve their sustainability targets & KPIs
- Reduce their environmental footprint
- Ensure regulatory compliance

Sustainable shipping is gradually getting more attention and becomes integral part of organizations' corporate strategy. Metis provides technology and expertise that combine performance assessment with emission monitoring, enabling shipping companies to achieve their sustainability targets and KPIs, manage effectively their environmental footprint as well as keep track of their compliance with the regulatory framework to be set in effect in the years 2020, 2030 & 2050 respectively.



Happy Customers

INDICATIVE REFERENCES



OLYMPIC SHIPPING & MANAGEMENT



PLEIADES SHIPPING AGENTS S.A.



Neptune Lines



OMSC - MITSUI Group



Andriaki



Lavinia Bulk LTD



Thenamaris



Arcadia



Seenergy



Atlantic Bulk Carriers



ANGELAKOS (HELLAS) S.A.



PIONEER MARINE



ESVAGT



X-PRESS FEEDERS



OCEONIX SERVICES LIMITED



27

Customers



>246

Registered Vessels



> 640

METIS IoT Devices



>2.5 billion

Measurements / Month



METIS Cyberspace technology S.A
4 Sachtouri str. & 2 Posidonos Av., 176 74, Kallithea, Athens, Greece
www.metis.tech - info@metis.tech

